

002285



	10 10

/

26

/

/

/

/

/

/

/

/

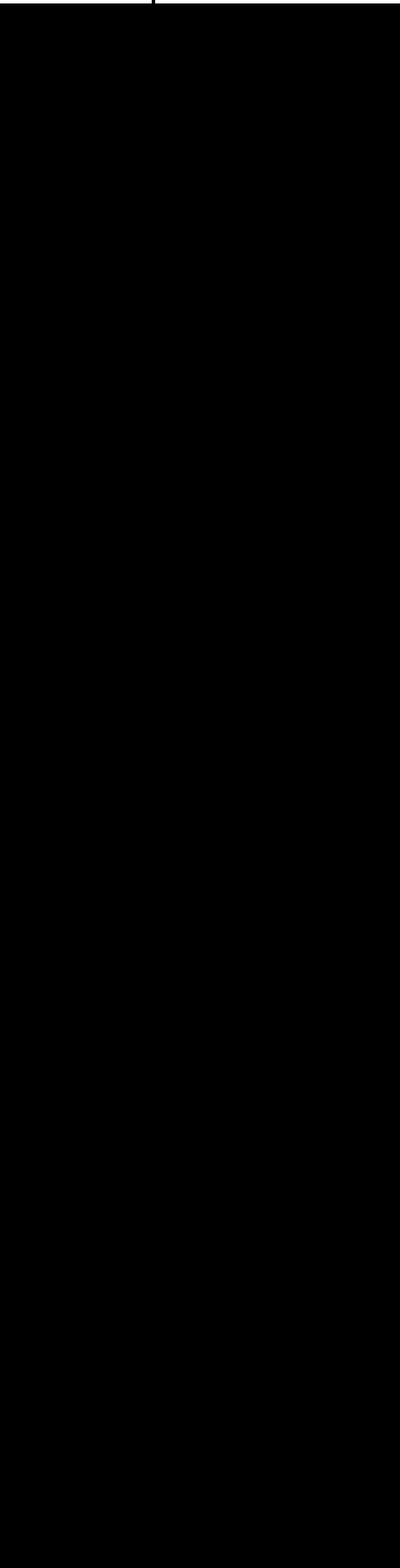








		81.02%

81.02%

10

10

100%

20%

5

5%

12

2019 8 20

2.04

2.04

	15,300	30%
	<b>51,000</b>	<b>100%</b>

2019 8

6

81.02%

1 Ñ p§£C<D0 @a Ñ ÷ Ñ qú >| é ?

A

1.00

2

90%

20

60

120

	/	90%	/
20	3.26		2.93
60	3.71		3.34
120	4.09		3.68

=

/



10 10

3

20

90%

4



**1**

+

**2**

1

2

3

4

2019 12 13

1

2

3

4

5

		<p>1.</p> <p>2.</p> <p>3.</p>
		<p>1.</p> <p>2.</p>
		<p>1.</p> <p>2. /</p> <p>3. /</p> <p style="text-align: right;">/</p>

		/
		/
		1. /
		12 /
		2. /
		1. / /
		2. /
		3. /
		1. / /
		2. / /
		3. /
		/
		4. / /
		/
		/

--	--	--

1. /

2. /

3. /



2019 12 2

2019 12 13

2019 12





1

128

20

20.00%

128

2

3

**1**

1

2

3

4                    2019   12   13

**2**

1

2

3

4

5

Lantau Direct Investments Mauritius III Ltd

10 10

100%

					2017
2018	2019	1-11	12,832.80	6,771.30	-8,208.78

81.02%

10

10

100%

20%

**1**





41.67% 41.79% 41.24%

1998

**3**

B

100

**4**

C



2

3

90%

20

60

120

6

÷

5

1

A

1.00

2

10

10

3

20

90%

4

100%

20%

÷

5



5%

12

2019 8 20

2.04

2.04



15,300

36

1

100%

2

100%

3

100%

4

100%

5

6

1

+

2

81.02%

	Shenzhen Worldunion Group Incorporated
	91440300618867554R
	002285
	2028 12
	2,042,970,972

2,042,970,972

33,209,094 2,009,761,878

		%
/	33,209,094	1.63
	23,817,194	1.17
	9,391,900	0.46
	2,009,761,878	98.37
	2,042,970,972	100.00

			%
1		805,051,180	39.41
2		196,659,442	9.63
3		90,902,804	4.45
4		89,164,386	4.36
5	GIC PRIVATE LIMITED	36,327,091	1.78
6	[REDACTED]		

8		18,299,610	0.90
9		13,200,091	0.65
10	500	12,876,854	0.63
		<b>1,302,636,039</b>	<b>63.76</b>

+

2017    2018    2019    1-9

	2019 1-9		2018		2017	
	285,702.70	62.01%	528,688.11	70.62%	649,760.65	79.33%
	63,273.79	13.74%	101,340.99	13.54%	84,366.31	10.30%
	63,804.31	13.85%	63,380.80	8.47%	33,387.81	4.08%
	47,892.71	10.40%	55,183.50	7.37%	51,515.37	6.29%
	<b>460,673.51</b>	<b>100.00%</b>	<b>748,593.40</b>	<b>100.00%</b>	<b>819,030.14</b>	<b>100.00%</b>

2017    2018    2019    1-9

	2019 9 30 /2019 1-9	2018 12 31 /2018	2017 12 31 /2017
	1,234,413.58	1,322,023.47	1,363,349.45
	690,740.02	780,320.56	844,482.99
	543,673.55	541,702.91	518,866.46
	535,204.87	529,982.96	506,844.27
	467,549.28	753,363.84	821,154.70

	11,215.67	72,962.72	147,107.56
	13,737.65	74,891.81	149,109.10
	6,057.44	45,368.25	105,584.29
	6,578.72	41,572.47	100,388.35
	88,550.90	96,749.31	-302,587.15
	-10,548.75	-57,214.84	-66,305.73
	-50,282.20	-43,001.94	287,355.61
	27,746.84	-3,405.64	-81,594.79
%	55.96	59.02	61.94
%	11.66	21.66	26.53

/



6

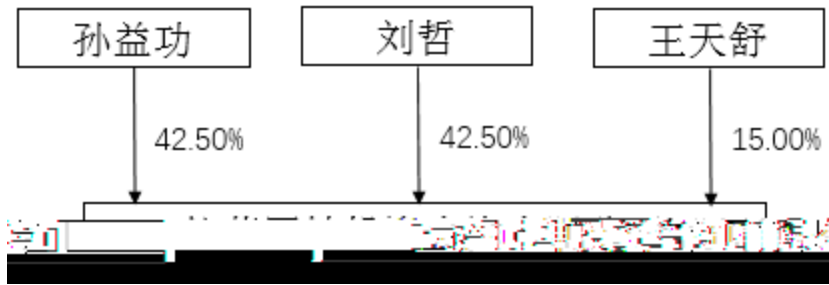
	****

	158                      2    4            452
	750
	91540091064692341G
	2002    06    22

42.50%

42.50%

15.00%



	3101061978****
	****

	4414231971****

	***

	913100006311244217

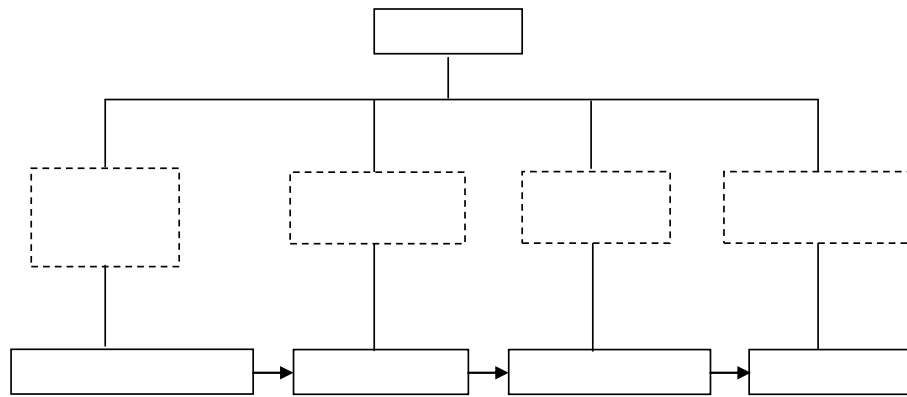
30.02%

30.02%

68.14%

8.10%

**1**



**2**

**3**

4

1

20

54

2019

**2**

2017            2018            2019    1-11

	<b>2019    11    30</b>	<b>2018    12    31</b>	<b>2017    12    31</b>
	204,544.85	238,622.65	226,941.93
	81,322.58	58,831.07	51,206.98
	123,222.27	179,791.58	175,734.96
	115,052.83	170,762.23	168,010.91
	39.76%	24.65%	22.56%
	<b>2019    1-11</b>	<b>2018</b>	<b>2017</b>
	148,267.52	167,569.02	144,304.94
	-7,016.31	15,532.82	22,584.77

81.02%

81.02%

A

1.00

90%

20

60

120

	/	<b>90%</b> /
20	3.26	2.93
60	3.71	3.34
120	4.09	3.68

=

/

2.94 /

20

90%

÷

12

10 10

100%

20%

A

1.00

10 10

60

20

90%

100%

20%

÷



+

81.02%



1

128

20

20.00%

128

2

3

4                    2019   12   13

**2**

1

2

3

4

5

	“		”
Lantau Direct Investments		Mauritius	III Ltd
	“		”
	10	10	
			100%

					2017
2018	2019	1-11	12,832.80	6,771.30	-8,208.78



12

12

12

70

12

2019 8 20

2.04

2.04

	15,300	51%
	14,700	49%
	<b>30,000</b>	<b>100%</b>

40%

2019 10

10,000

2020 6 30

10,400

	20,400	40%
	15,300	30%
	15,300	30%
	<b>51,000</b>	<b>100%</b>

12

20%

128

2019 12 2

20

2019 11 4 2019

11 29

21 2019 11 1

002285.SZ

399106.SZ

886057.WI

	<b>2019/11/29</b>	<b>2019/11/1</b>	
--	-------------------	------------------	--

/	3.19	3.50	-8.86%
	1,593.10	1,637.00	-2.68%
	3,816.05	3,713.98	2.75%
	-6.18%		
	-11.61%		

2019 11 1

3.50 /

1

2

5%

3

4

5

6

7



---

---

---

---

---

---

---

---

---

---

---

---



